



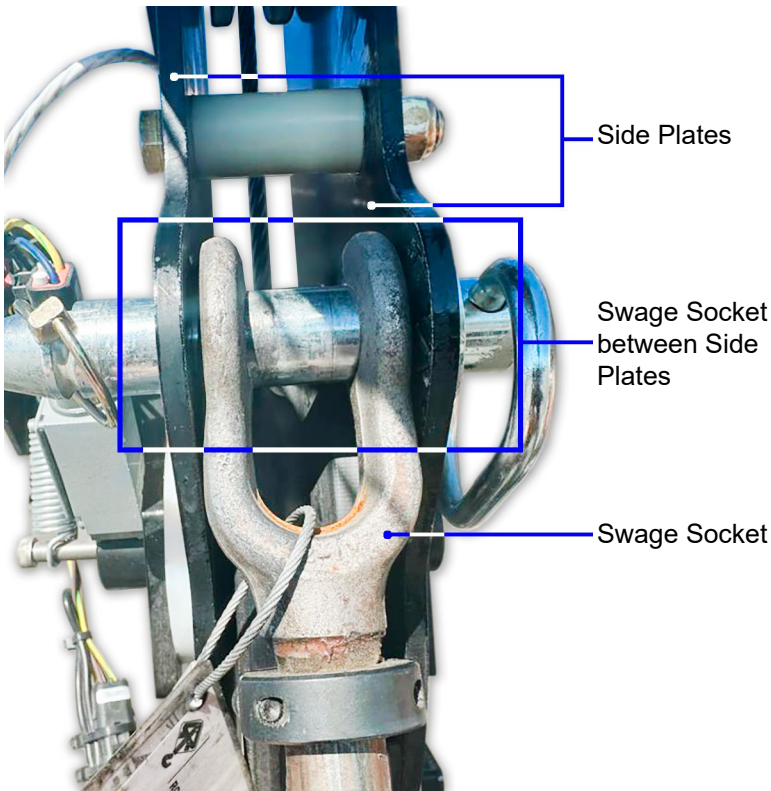
An Oshkosh Corporation Company

# GENERAL BULLETIN GB2023005 TELESCOPIC CRANE WIRE ROPE SWAGE SOCKET FIT

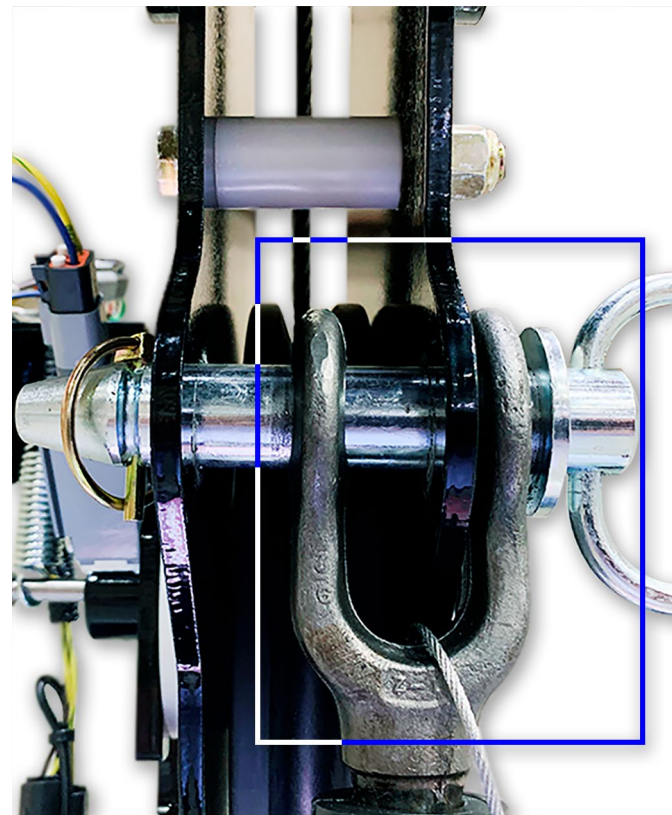
Subject:	TELESCOPIC CRANE WIRE ROPE SWAGE SOCKET FIT
Attn:	IMT Distributors
From:	IMT Tech Support
Date:	November 21, 2023
Affected Models:	10000 & 12000 Telescopic Cranes

### Why are you receiving this bulletin?

IMT has determined that due to manufacturing tolerance variation, the swage socket on the wire rope may not always fit between the side plates of the boom tip as shown in picture 1. When this occurs, the swage socket is pinned in an offset position to one side plate as shown in picture 2. There are no structural issues with this installation method.



Picture 1



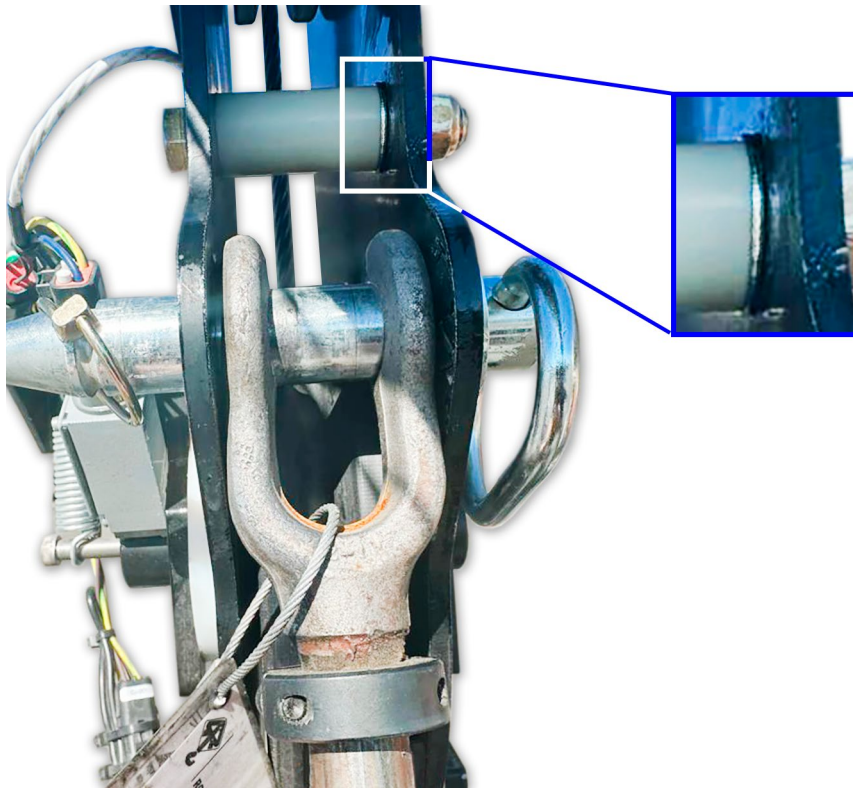
Picture 2

**What should you do?** If it is desired to locate swage socket between the side plates, use the following instructions.

**Safety Notices:**

- Follow your company's Lock-Out/Tag-Out procedures to prevent the truck from being started or moved while performing work on this crane. If your company does not have a Lock-Out/Tag-Out procedure, follow OSHA 1910.147, Lock-Out/Tag-Out.
- Use appropriate Personal Protective Equipment (PPE) as required by your company.
- Read and understand the following instructions prior to starting work on the crane.

**Instructions:** Install one 1/2" flat washer (72063132) between the nylon spacer and the inside side plate (on the opposite side of the nut).



In some situations where excessive flashing material is present on swage socket, we recommend careful removal of material from both sides of the swage socket. In most cases, the amount of material will be less than 1/32".

Before Grinding



After Grinding



**Do you have questions?**

If you have any questions or need additional assistance, please contact IMT Technical Support at 1-800-554-4421 or 641-923-4633.