



An Oshkosh Corporation Business

STRONG. LONG. LIGHT.
TELESCOPIC CRANES





The Future of Lifting is Here

Our new family of telescopic cranes delivers exceptional lifting capacity and reach while optimizing weight for improved efficiency. Engineered with high-strength steel, this new line ensures robust safety and durability. Validated through rigorous J-1063 certification, our complete family of cranes includes 16 models with capacities from 3,300 pounds to 12,600 pounds and boom lengths ranging from 18 feet to 32 feet. Our design prioritized simplified maintenance and common operational features. Inspired by our customers' needs, we're committed to evolving our crane technology to provide maximum value. This range offers advanced, reliable solutions, empowering customers to tackle daily challenges and optimize their operations.

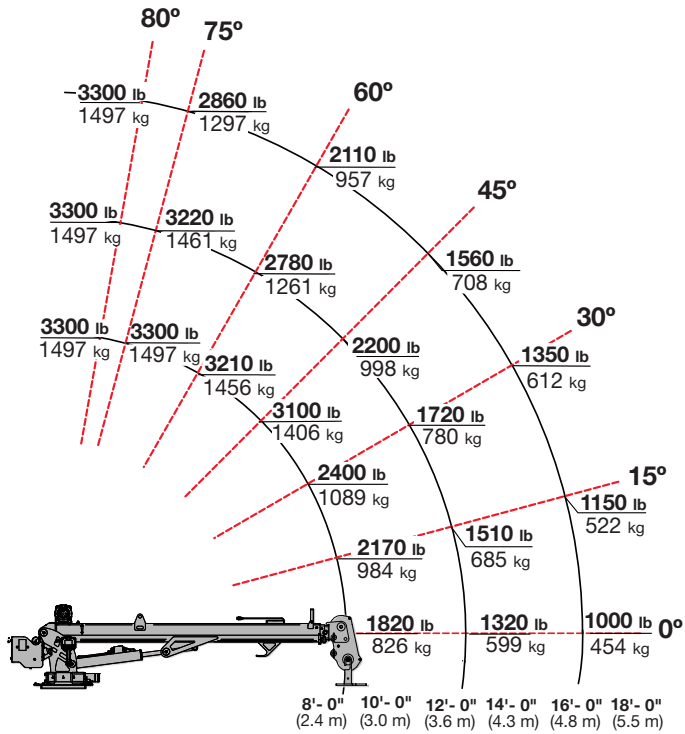
Standard Features

- **Superior Lifting Performance:** Achieves exceptional lifting capacity and efficiency in critical working zones (15-80°) through our proven Penta Boom™ design.
- **Extended Reach & Tight Space Navigation:** Provides added length for outstanding reach and access to challenging areas. A standard flip sheave boom tip across all new models reduces boom tip height by approximately 8" for easier work in confined spaces.
- **Strong, Light & Efficient Design:** Maximizes payload capacity and operational efficiency through high-strength steel construction, resulting in a significant weight reduction without compromising strength or reach.
- **Engineered for Durability & Reliability:** Built to rigorous IMT standards for long-lasting performance, validated through extensive testing and confirmed by industry-standard J-1063 certification.
- **Standardized Components:** Consistent valve banks for electric and hydraulic model families and a common robust flip sheave design simplify maintenance and reduce parts inventory.
- **Versatile Configurations:** Offers a wide range of models with progressive lengths and capacities, ensuring the perfect crane solution for diverse job requirements.
- **CMD.CTRL™ Remote System:** User-friendly radio remotes, standardized for electric and hydraulic models, feature the innovative IMT® CMD.CTRL™ system. This provides operators with integrated remote control of both crane and body functions, significantly boosting convenience, precision, and on-site safety.

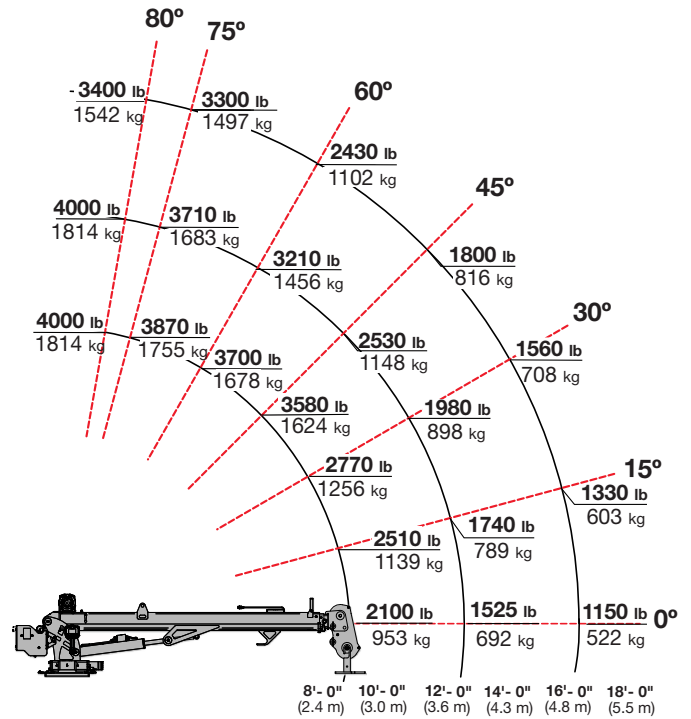


ELECTRIC TELESCOPIC CRANES

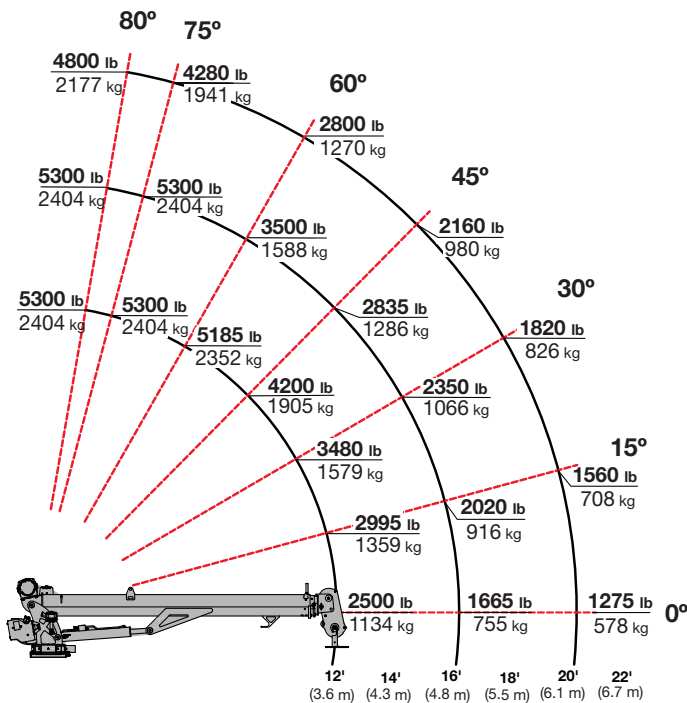
3300e-18



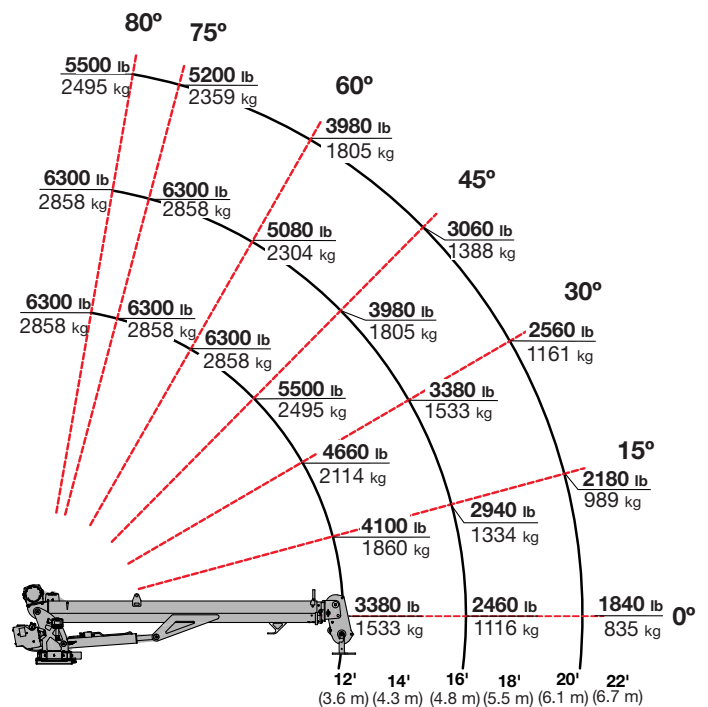
4300e-18



5300e-23

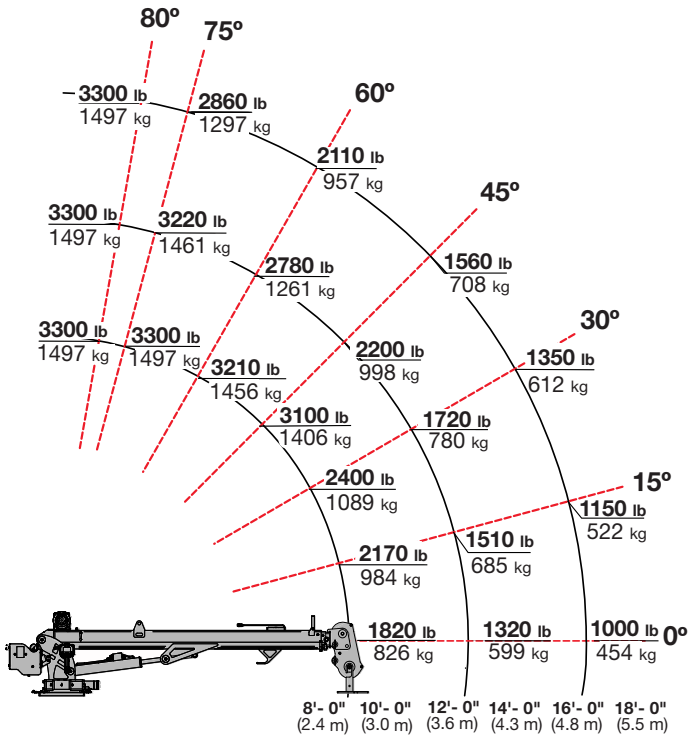


6300e-23

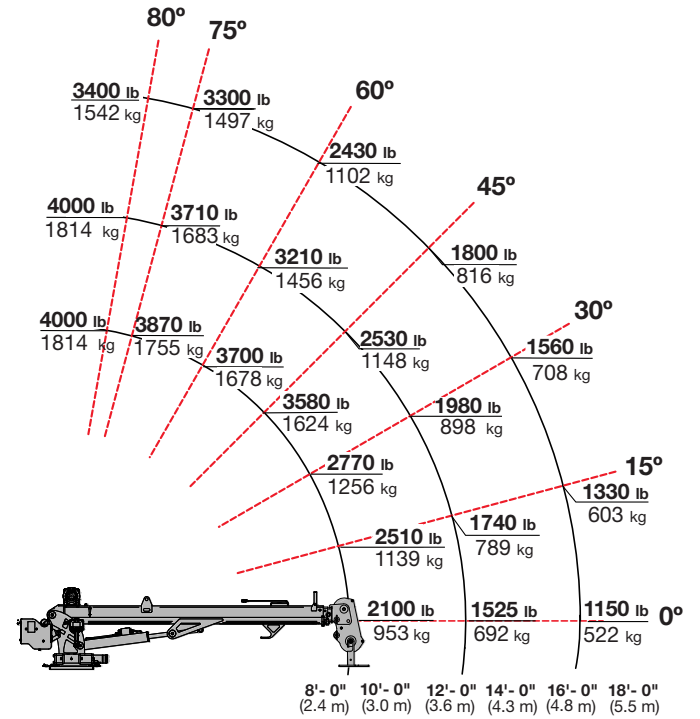


HYDRAULIC TELESCOPIC CRANES

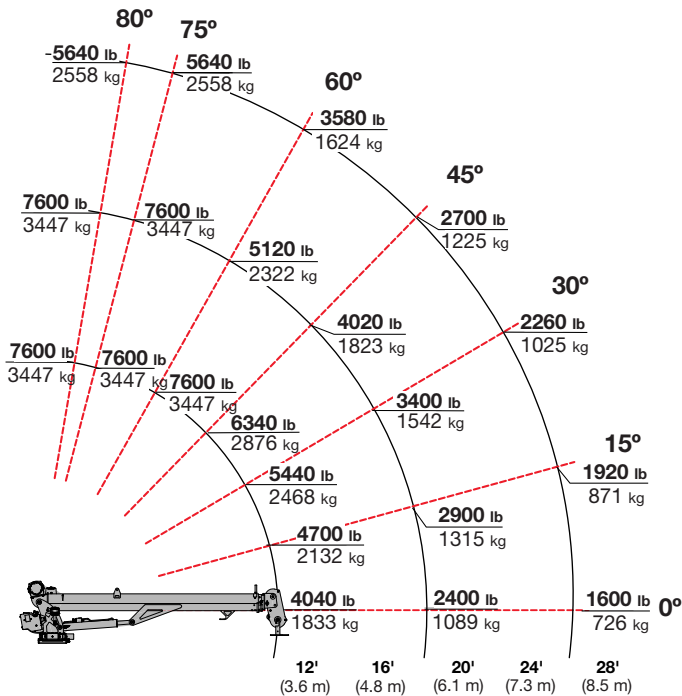
3300-18



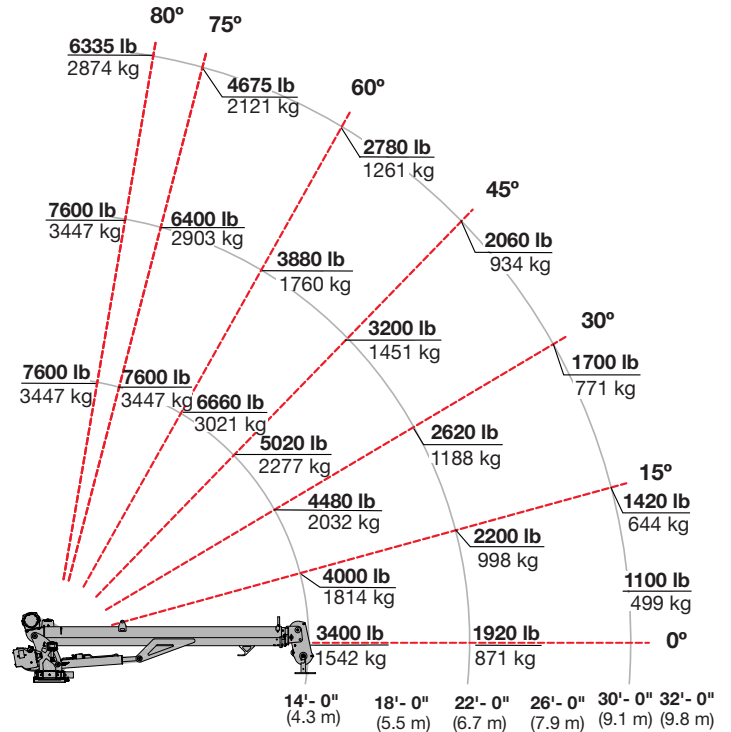
4300-18



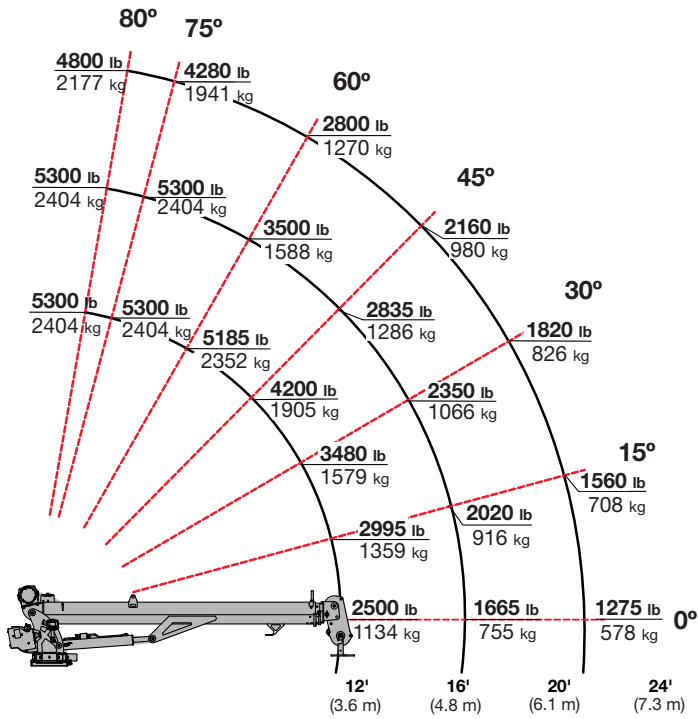
7600-27



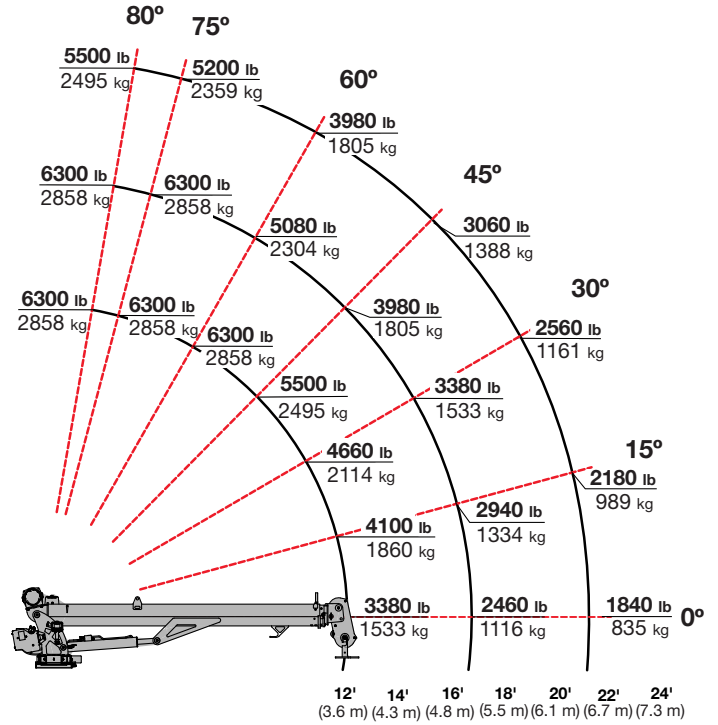
7600-32



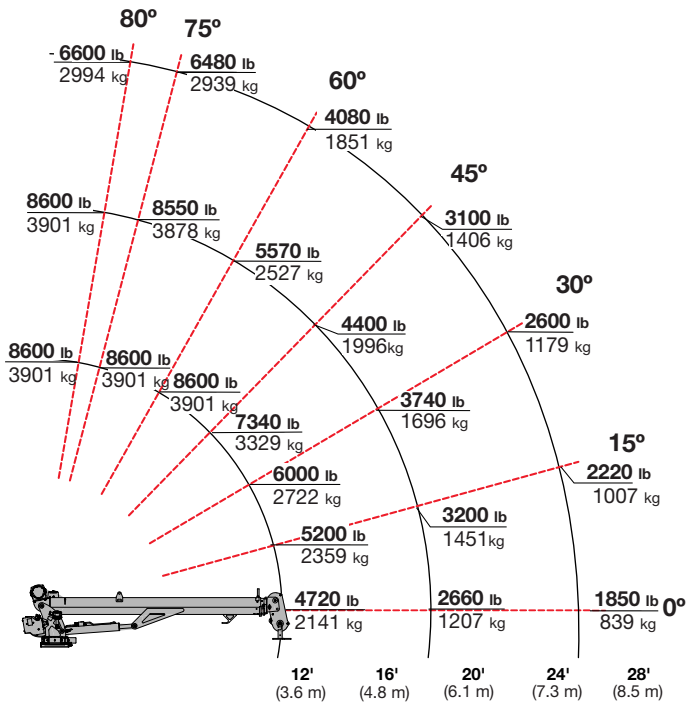
5300-23



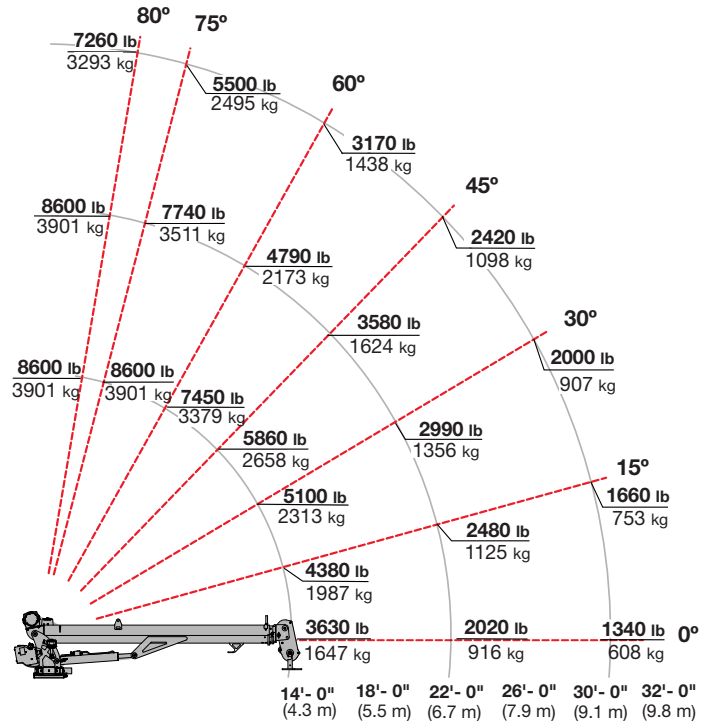
6300-23



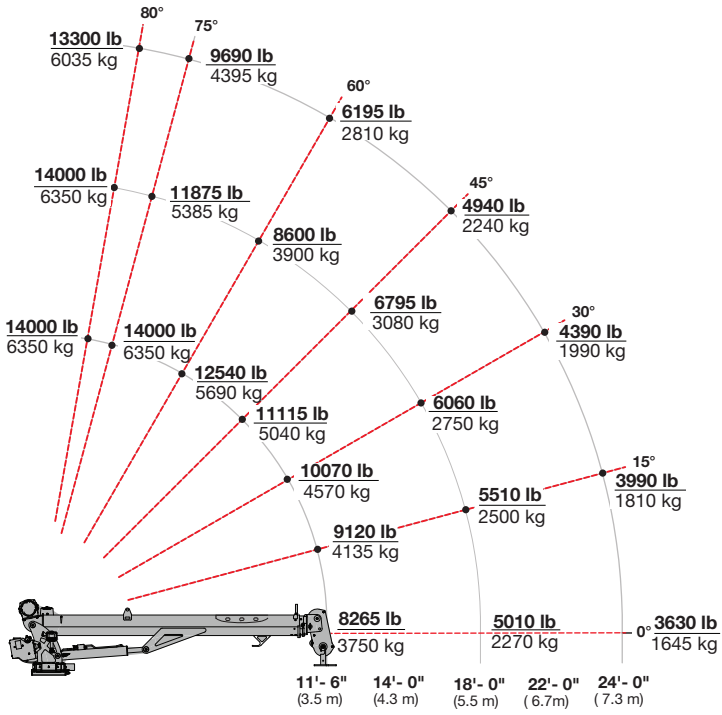
8600-27



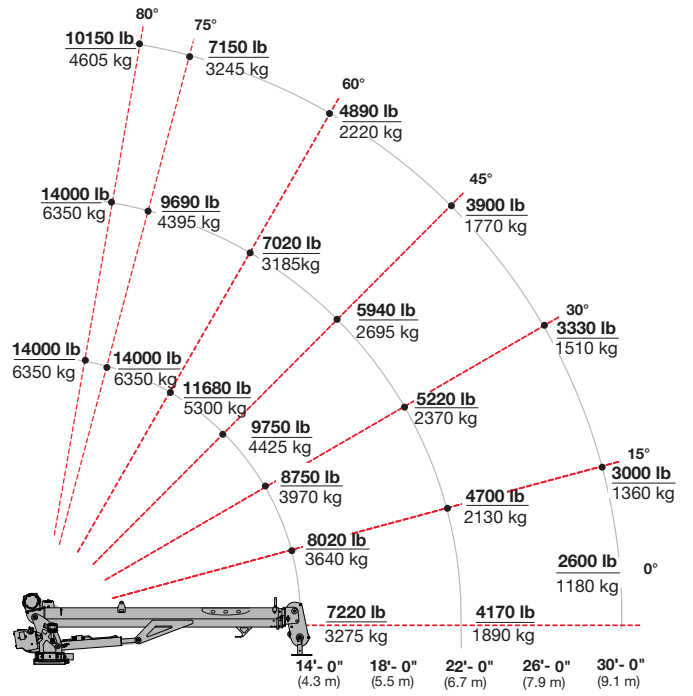
8600-32



14000-25



14000-30



POWERED BY PURPOSE

QUICK REFERENCE GUIDE

	Model	Max. Lift Capacity	Rating	Weight	Max. Horz. Reach*	Max. Vert. Reach**	Extension	Rotation	Required Mounting Space	Min. GVWR***
Electric	3300e-18	3,300 LB	18,000 FT-LB	821 LB	17' - 1"	18' - 1"	2 Hydraulic	400°	17.4" x 16.7"	11,500 LB
	4300e-18	4,000 LB	20,000 FT-LB	821 LB	17' - 1"	18' - 1"	2 Hydraulic	400°	17.4" x 16.7"	15,000 LB
	5300e-23	5,300 LB	32,000 FT-LB	1,231 LB	22' - 2"	23' - 4"	2 Hydraulic	400°	19.9" x 17.3"	18,000 LB
	6300e-23	6,300 LB	47,000 FT-LB	1,231 LB	22' - 2"	23' - 4"	2 Hydraulic	400°	19.9" x 17.3"	18,000 LB
Hydraulic	3300-18	3,300 LB	18,000 FT-LB	771 LB	17' - 1"	18' - 1"	2 Hydraulic	400°	17.4" x 16.7"	11,500 LB
	4300-18	4,000 LB	20,000 FT-LB	771 LB	17' - 1"	18' - 1"	2 Hydraulic	400°	17.4" x 16.7"	15,000 LB
	5300-23	5,300 LB	32,000 FT-LB	1,181 LB	22' - 2"	23' - 4"	2 Hydraulic	400°	19.9" x 17.3"	18,000 LB
	6300-23	6,300 LB	47,000 FT-LB	1,181 LB	22' - 2"	23' - 4"	2 Hydraulic	400°	19.9" x 17.3"	18,000 LB
	7600-27	7,600 LB	50,000 FT-LB	1,697 LB	26' - 3"	27' - 7"	2 Hydraulic	400°	21" x 18"	19,500 LB
	7600-32	7,600 LB	49,000 FT-LB	1,826 LB	30' - 10"	32' - 2"	2 Hydraulic	400°	21" x 18"	19,500 LB
	8600-27	8,600 LB	55,000 FT-LB	1,697 LB	26' - 3"	27' - 7"	2 Hydraulic	400°	21" x 18"	19,500 LB
	8600-32	8,600 LB	51,000 FT-LB	1,826 LB	30' - 10"	32' - 2"	2 Hydraulic	400°	21" x 18"	19,500 LB
	10600-27	10,600 LB	79,000 FT-LB	2,117 LB	26' - 1"	27' - 5"	2 Hydraulic	400°	22" x 19"	26,000 LB
	10600-32	10,600 LB	77,000 FT-LB	2,286 LB	30' - 11"	32' - 2"	2 Hydraulic	400°	22" x 19"	26,000 LB
	12600-27	12,600 LB	96,000 FT-LB	2,117 LB	26' - 1"	27' - 5"	2 Hydraulic	400°	22" x 19"	26,000 LB
	12600-32	12,600 LB	90,000 FT-LB	2,286 LB	30' - 11"	32' - 2"	2 Hydraulic	400°	22" x 19"	26,000 LB
	14000-25	14,000 LB	95,000 FT-LB	3,100 LB	24' - 10"	26' - 3"	2 Hydraulic	400°	24" x 25"	33,000 LB
	14000-30	14,000 LB	94,000 FT-LB	3,280 LB	30' - 11"	32' - 3"	2 Hydraulic	400°	24" x 25"	33,000 LB

*Flip sheave up & single line (From centerline of rotation)

** From mounting surface

***The gross vehicle weight rating (GVWR) is a minimum guideline. Contact IMT if you have questions regarding your particular installation.

About Us

From its 1961 origins in Garner, Iowa, as a tire-recapping mold business, Iowa Mold Tooling Co. Inc. (IMT) has evolved into a premier manufacturer of service vehicles and material handling systems. As a proud member of Oshkosh Corporation, IMT is dedicated to innovative, customer-first solutions. Our commitment to quality, reliability, and performance in products like mechanics trucks, lube trucks, air compressors, and truck-mounted cranes has cemented our status as a trusted global partner. At IMT, our skilled and passionate team is the cornerstone of our success, driving the innovation and excellence that help our customers tackle demanding tasks and achieve exceptional results.

Iowa Mold Tooling Co., Inc. | 500 Highway 18 West | Garner, Iowa 50438 | 800-247-5958 | imt.com

IMT reserves the right to make changes in engineering, design, and specifications; add improvements; or discontinue manufacturing at any time without notice or obligation. IMT, the IMT logo and IMT CMD.CTRL are registered trademarks or trademarks of Iowa Mold Tooling Co., Inc., Garner, IA, USA. © 2025 Iowa Mold Tooling Co., Inc. All Rights Reserved.
12/25



An Oshkosh Corporation Business